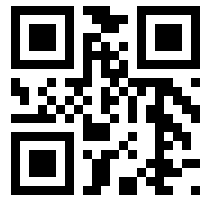


Parts List

887967_1.0



1310.090/.181

Table of Contents

1 Introduction.....	2
1.1 Specially approved products.....	2
2 Product Description.....	3
2.1 Products included.....	3
2.2 The data plate.....	3
2.3 Product denomination.....	3
3 Exploded View.....	5
3.1 Drive unit.....	5
3.2 Hydraulic unit.....	7
4 List of Parts.....	9
4.1 1310.090/.181.....	9

1 Introduction

Purpose of this manual

The purpose of this manual is to provide necessary information on spare parts and accessories order.

Disclaimer

Always use genuine Xylem parts. The use of other spare parts or accessories can invalidate any claims for warranty or compensation. Xylem does not take any responsibility for damages that are caused by the use of non-original parts. For more information, contact your local sales and service representative.

Data for ordering spare parts

The following information is needed for spare part orders:

- Serial number of the product
- Part number
- Quantity of bulk material, see * in tables

1.1 Specially approved products

Qualification of personnel

Only Xylem or Xylem-authorized service personnel may undertake repair work on specially approved products.

Dimensional accuracy inspection

Spare parts marked with (Ex) after the part number are subject to dimensional accuracy inspection when used in specially approved products.

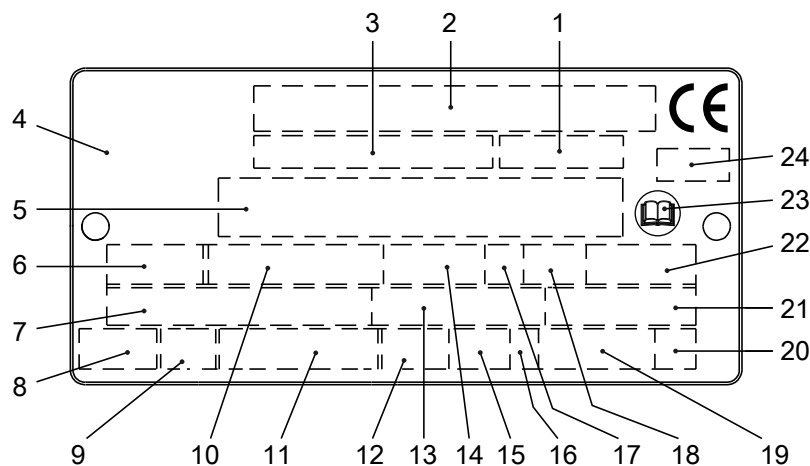
2 Product Description

2.1 Products included

Pump model	Standard	EX
1310.090		X
1310.181	X	

2.2 The data plate

The data plate is a metal label that is located on the main body of the products. The data plate lists key product specifications. Specially approved products also have an approval plate.



1. Curve code or Propeller code
2. Serial number
3. Product number
4. Country of origin
5. Additional information
6. Phase; type of current; frequency
7. Rated voltage
8. Thermal protection
9. Thermal class
10. Rated shaft power
11. International standard
12. Degree of protection
13. Rated current
14. Rated speed
15. Maximum submergence
16. Direction of rotation: L=left, R=right
17. Duty class
18. Duty factor
19. Product weight
20. Locked rotor code letter
21. Power factor
22. Maximum ambient temperature
23. Read installation manual
24. Notified body, only for EN-approved Ex products

Figure 1: The data plate

2.3 Product denomination

Reading instruction

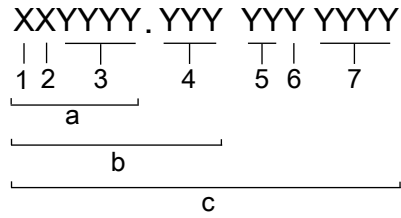
In this section, code characters are illustrated accordingly:

X = letter

Y = digit

The different types of codes are marked up with a, b and c. Code parameters are marked up with numbers.

Codes and parameters



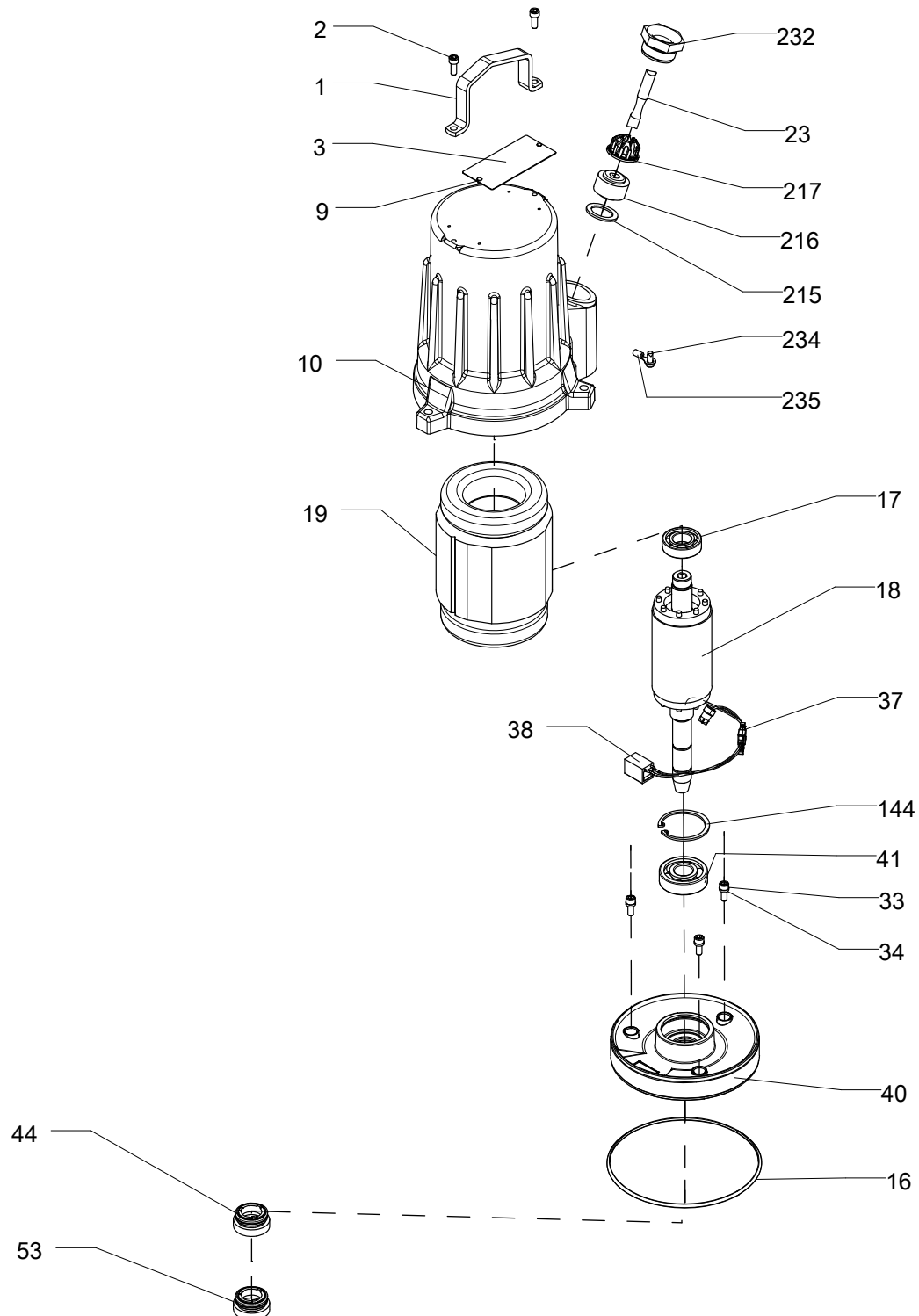
WS006265B

Type of Callout	Number	Indication
Type of code	a	Sales denomination
	b	Product code
	c	Serial number
Parameter	1	Hydraulic end
	2	Type of installation
	3	Sales code
	4	Version
	5	Production year
	6	Production cycle
	7	Running number

3 Exploded View

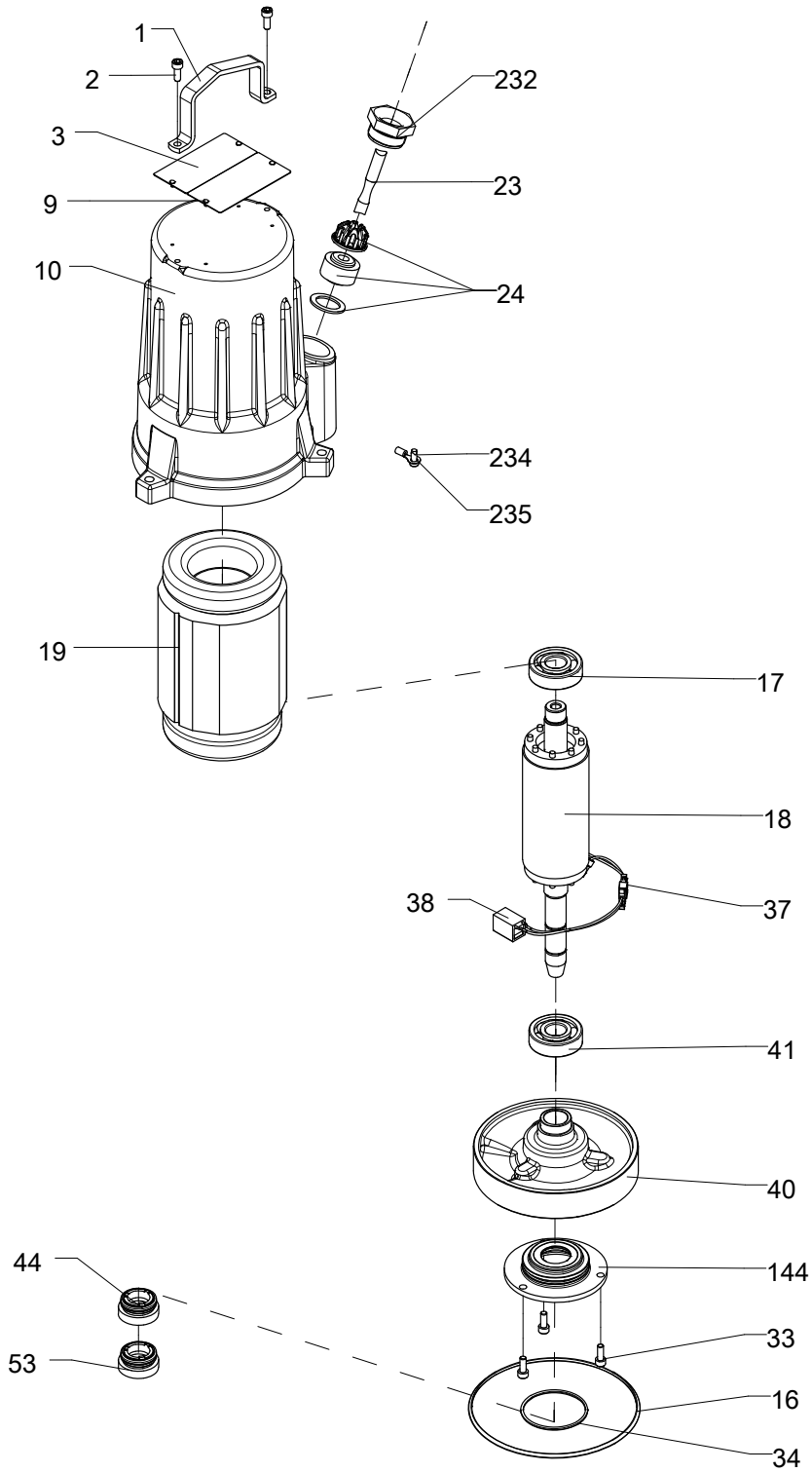
3.1 Drive unit

1310.181



10093A

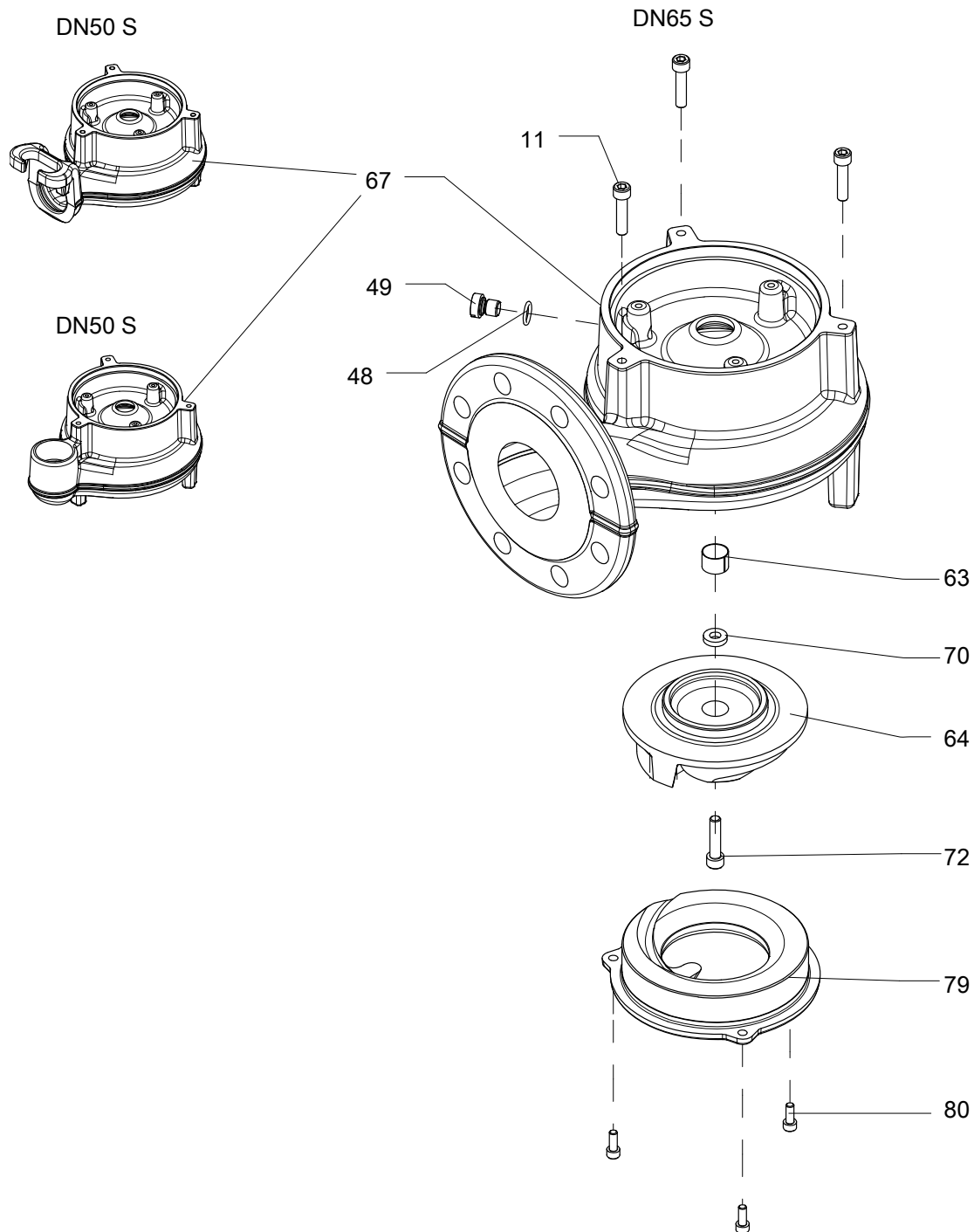
1310.090



10094A

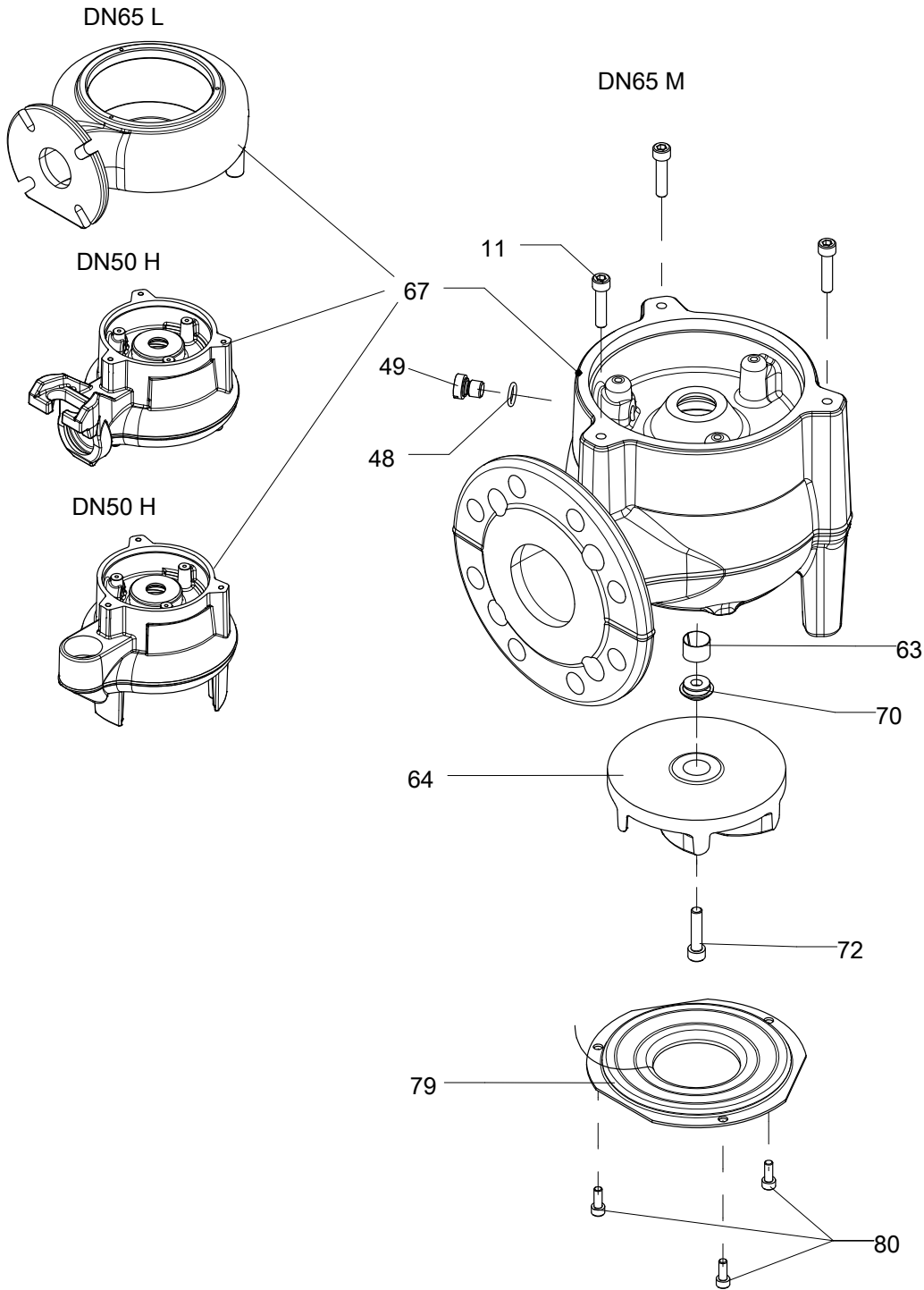
3.2 Hydraulic unit

Non-clog



10096A

Vortex



10095A

4 List of Parts

4.1 1310.090/.181

Pos. No	Part. No	Type	Denomination	Qty/Version	
				090	181
1	555 61 01	(Ex)	Lifting handle V2A	1	1
2	82 00 13		Hex.socket hd screw M6X16-A2-70	2	2
3	630 68 09		Data plate LOWARA	1	
3	630 69 04	(Ex)	Certificate plate	1	
3	630 68 12		Data plate	1	2
3	630 70 07	(Ex)	Certificate plate	1	
3	630 68 03		Data plate STEADY		1
3	630 68 08		Data plate GOULDS		1
3	630 68 09		Data plate LOWARA		1
9	82 20 88		Drive screw 4X5-A2/A4	4	2
10	722 51 05	(Ex)	Stator housing	1	
10	722 53 01	(Ex)	Stator housing	1	
10	722 51 06		Stator housing		1
10	722 53 04		Stator housing		1
11	83 04 45		Hex.socket hd screw M8X35-A4-80	3	3
15	772 17 05		Connection plate	1	1
16	82 78 26		O-ring 156X3 NBR	1	1
17	83 33 07		Ball bearing 6004-2Z	1	1
18	762 74 01	(Ex)	Shaft unit	1	
18	762 74 00	(Ex)	Shaft unit	1	
18	800 62 00	(Ex)	Shaft unit	1	
18	722 56 01		Shaft unit		1
18	722 56 00		Shaft unit		1
18	789 79 00		Shaft unit		1
19	735 97 03		Stator 13-13-2b	1	1
19	638 95 01		Stator 13-10-2b	1	1
19	735 97 01		Stator 13-13-2b	1	1
19	638 95 11		Stator 13-10-2b	1	1
19	638 95 06		Stator 13-10-2b	1	1

Pos. No	Part. No	Type	Denomination	Qty/Version	
				090	181
19	638 95 08		Stator 13-10-2b 60 Hz 2-poles 380V-400V Y P2=2,80kW/3,80hp	1	1
19	638 95 04		Stator 13-10-2b 60 Hz 2-poles 600V Y P2=2,40kW/ 3,20hp	1	1
19	638 95 16		Stator 13-10-2b 60 Hz 2-poles 220V D// 440V DSER 380V Y// P2=2,80kW/3,80hp	1	1
19	656 12 01		Stator 13-10-4b 1phs 1-phase 50 Hz 4-poles 220V-240V P2=1,30kW	1	1
19	656 13 01		Stator 13-10-4b 50 Hz 4-poles 230V D 400V-415V Y P2=2kW 60 Hz 4-poles 460V Y P2=2,40kW/ 3,20hp	1	1
19	656 13 09		Stator 13-10-4b 50 Hz 4-poles 380V Y P2=2kW	1	1
19	656 13 03		Stator 13-10-4b 60 Hz 4-poles 230V P2=1,50kW/2hp	1	1
19	656 13 07		Stator 13-10-4b 60 Hz 4-poles 200V-208V Y P2=2,40kW/3,20hp	1	1
19	656 13 16	(Ex)	Stator 13-10-4b 60 Hz 4-poles 220V-230V D// 460V DSER 380V Y// P2=2,40kW/3,20hp	1	
19	656 13 13		Stator 13-10-4b 60 Hz 4-poles 230V Y// 460V YSER P2=2,40kW/3,20hp	1	1
19	656 13 06		Stator 13-10-4b 60 Hz 4-poles 380V Y P2=2,40kW/ 3,20hp	1	1
19	656 13 02		Stator 13-10-4b 1-phase 60 Hz 4-poles 115V P2=1,50kW/2hp		1
20	83 65 00		Insulating hose DIAM=30, L=90 MM	1	1
23	94 20 61		Motor cable subcab 4G1.5+2X1.5	*	*
23	94 20 59		Motor cable subcab 4G2.5+2X1.5	*	*
23	94 20 60		Motor cable subcab 4G4+2X1.5	*	*
23	94 20 41		Motor cable subcab 4G1.5		*
23	94 20 56		Motor cable subcab 4G6+2X1.5		*
24	638 27 02	(Ex)	Cable entry unit (14)-16mm	1	1
24	638 27 03	(Ex)	Cable entry unit (16)-18mm	1	1
24	638 27 04	(Ex)	Cable entry unit (18)-20 MM NBR	1	1
24	638 27 05	(Ex)	Cable entry unit 20-(22)MM NBR	1	1
24	638 27 14	(Ex)	Cable entry unit 22-(24)MM NBR	2	
24	638 27 15	(Ex)	Cable entry unit (24)-25mm	2	
24	638 27 16		Cable entry unit 25-(26) MM NBR	2	
24	638 27 00		Cable entry unit		1
24	638 27 01	(Ex)	Cable entry unit (12)-14MM NBR		1
24	638 27 14	(Ex)	Cable entry unit 22-(24)MM NBR		1
24	638 27 15	(Ex)	Cable entry unit		1
24	638 27 16		Cable entry unit 25-(26) MM NBR		1
33	82 00 13		Hex.socket hd screw M6X16-A2-70	3	3
34	82 74 65		O-ring 59.5X3 NBR	1	
34	82 50 60		Sealing washer DUBO NR 301		3
37	504 78 07		Cable unit	1	1

Pos. No	Part. No	Type	Denomination	Qty/Version	
				090	181
38	518 89 02		Leakage sensor (FLS)	1	1
40	516 79 01	(Ex)	Bearing holder	1	
40	539 83 00		Bearing holder GD-AL		1
41	83 33 13		Ball bearing 20X52X15 MM	1	1
44	726 51 00		Mechanical seal Al2O3/CARBON NBR	1	1
45	82 00 15		Hex.socket hd screw M6X20-A2-70	3	3
46	539 94 05		Oil housing bottom FOR STANDARD SEAL	1	1
48	82 73 85		O-ring 13.3X2.4 NBR	1	1
49	303 44 03		Hex.socket hd screw	1	1
53	726 51 01		Mechanical seal AL203/WCCR NBR	1	1
63	397 88 02		Sleeve	1	1
64	783 06 00		Impeller Non-clog S Curve code: 260	1	1
64	783 06 01		Impeller Non-clog S Curve code: 262	1	1
64	783 06 02		Impeller Non-clog S Curve code: 264	1	1
64	783 06 03		Impeller Non-clog S Curve code: 266	1	1
64	645 78 00		Impeller Vortex L Curve code: 480	1	1
64	645 78 01		Impeller Vortex L Curve code: 481	1	1
64	645 78 02		Impeller Vortex L Curve code: 482	1	1
64	645 78 03		Impeller Vortex L Curve code: 483	1	1
64	645 78 04		Impeller Vortex L Curve code: 484	1	1
64	733 08 10		Impeller Vortex M Curve code: 285	1	1
64	733 08 22		Impeller Vortex M Curve code: 287	1	1
64	733 08 34		Impeller Vortex M Curve code: 289	1	1
64	645 64 00		Torque flow impeller Vortex H Curve code: 290	1	1
64	645 64 01		Torque flow impeller Vortex H Curve code: 292	1	1
64	645 64 02		Torque flow impeller Vortex H Curve code: 294	1	1
67	783 03 00		Pump housing S Non-clog DN 50 2 " outlet Sliding bracket Installation: Wet-well	1	1
67	783 04 00		Pump housing S Non-clog DN 50 2 " outlet ISO G2 Installation: Free-standing	1	1
67	783 04 01		Pump housing S Non-clog DN 50 2 " outlet 2-11 1/2 NPT Installation: Free-standing	1	1
67	783 05 01		Pump housing S Non-clog DN 80 3 " outlet Drilled acc. to: EN 1092-2 tab. 9 Installation: X	1	1
67	783 05 02		Pump housing S Non-clog DN 65 2,50 " outlet Drilled acc. to: EN 1092-2 tab. 9 Installation: X	1	1
67	783 05 05		Pump housing S Non-clog DN 80 3 " outlet Drilled acc. to: ANSI B16.1-89; tab.5 Installation: X	1	1
67	511 12 02		Pump housing L Vortex DN 80 3 " outlet Drilled acc. to: ANSI B16.1-89; tab.5 Installation: X Throughlet diameter: 65	1	1
67	733 26 01		Pump housing M Vortex DN 80 Drilled acc. to: EN 1092-2 tab. 9 Installation: X Throughlet diameter: 65	1	1

Pos. No	Part. No	Type	Denomination	Qty/Version		
				090	181	
67	733 26 02		Pump housing	M Vortex DN 65 2,50 " outlet Drilled acc. to: EN 1092-2 tab. 9 ANSI B16.1-89; tab.5 Installation: X	1	1
67	733 26 05		Pump housing	M Vortex DN 80 3 " outlet Drilled acc. to: ANSI B16.1-89; tab.5 Installation: X Throughlet diameter: 65	1	1
67	555 62 02		Pump housing	H Vortex DN 50 2 " outlet Sliding bracket Installation: Wet-well	1	1
67	555 63 04		Pump housing	H Vortex DN 50 2 " outlet ISO G2 Installation: Free-standing	1	1
67	555 63 05		Pump housing	H Vortex DN 50 2 " outlet 2-11 1/2 NPT Installation: Free-standing	1	1
70	652 53 00		Supporting washer		1	1
72	83 04 45		Hex.socket hd screw M8X35-A4-80		1	1
79	783 07 00		Suction cover	Non-clog S	1	1
79	733 60 00		Suction cover	Vortex M	1	1
79	555 65 01		Suction cover	Vortex H	1	1
80	82 00 13		Hex.socket hd screw M6X16-A2-70		3	3
144	516 81 00		Bearing cover		1	
144	82 62 07		Retaining ring SGH 52			1
169	790 90 00		Sticker	Lowara EN Lowara IECEx	1	
169	667 40 00		Sticker	Flygt FM	1	1
169	728 55 00		Sticker	Steady		1
169	790 90 00		Sticker	Lowara		1
232	397 81 00	(Ex)	Gland screw Pr 37	Cable entry (16)-18mm Cable entry (20)-22mm Cable entry (14)-16mm Cable entry (22)-24mm	1	1
232	800 64 00	(Ex)	Gland screw Pr 37	Cable entry (25)-26mm Cable entry (24)-25mm Cable entry (22)-24mm	1	
232	397 81 01	(Ex)	Gland screw Pr 37	Cable entry (25)-26mm Cable entry (24)-25mm	1	
232	397 81 01	(Ex)	Gland screw Pr 37			1
234	82 17 61		Cutting screw TAPTITE-M6X12		1	1
235	83 43 58		Cable lug UL/CSA 1.04-2.62 MM2 M6		1	1
236	83 44 24		Closed-end splice 3-6 (AWG 12-10)		1	1
236	83 43 59		Cable lug UL/CSA 2.62-6.64 MM2 M6		7	7
236	83 44 24		Closed-end splice 3-6 (AWG 12-10)			7
236	83 44 24		Closed-end splice 3-6 (AWG 12-10)			2
236	83 44 23		Closed-end splice 4.0-9.0 (AWG 8)			5
236	83 44 21		Closed-end splice 6.0-13.29 (AWG 10-6)			5

Pos. No	Part. No	Type	Denomination	Qty/Version	
				090	181
245	555 59 01		Seal ring PERBUNAN, GREY	1	
701	780 64 00		Installation kit 2.5"H		1
701	780 64 02		Installation kit 2.5"H		1
701	780 65 09		Installation kit		1
701	780 65 10		Installation kit		1
702	780 64 00		Installation kit 2.5"H		1
702	780 64 02		Installation kit 2.5"H		1
702	780 65 15		Installation kit 3"H		1
702	780 65 16		Installation kit 3"H		1
703	790 38 01		Installation kit 65H 1310 S,M		1
703	790 38 11		Installation kit 65H 1310 L		1
703	790 38 13		Installation kit 80H L		1
703	790 38 14		Installation kit 80H S,M		1
711	780 64 01		Installation kit		1
711	780 64 04		Installation kit		1
711	780 65 11		Installation kit		1
711	780 65 12		Installation kit		1
712	780 65 13		Installation kit 3"T		1
712	780 65 14		Installation kit 3"T		1
713	790 38 06		Installation kit 65T S,M		1
713	790 38 15		Installation kit 65T L		1
713	790 38 17		Installation kit 80T L		1
713	790 38 18		Installation kit 80T S,M		1
721	780 64 20		Installation kit		1
721	790 37 21		Installation kit 80W		1
722	780 64 23		Installation kit 2"W		1
722	790 37 20		Installation kit 2.5"W		1
722	790 37 23		Installation kit 3"W		1
723	790 38 20		Installation kit 50W S,M		1
723	790 38 21		Installation kit 65W		1
723	790 38 22		Installation kit 80W		1
731	776 78 07		Sliding bracket unit 80R		1
732	776 78 05		Installation kit 3"R		1
732	781 81 00		Sliding bracket unit 2.5"R		1
733	776 78 08		Sliding bracket unit 80R		1
733	781 81 01		Sliding bracket unit 65R		1
800	80 58 09		O-ring kit		1
808	781 62 03		Impeller kit		1
808	781 62 04		Impeller kit		1
808	781 62 07		Impeller kit		1
808	781 62 08		Impeller kit		1
808	781 62 09		Impeller kit		1
808	781 62 41		Impeller kit		1
808	808 81 00		Impeller kit		1

4 List of Parts

Pos. No	Part. No	Type	Denomination	Qty/Version	
				090	181
808	822 29 00		Impeller kit		1
813	780 62 30		Cable kit		1
813	780 62 32		Cable kit		1
817	781 61 01		Suction cover kit		1
817	781 61 02		Suction cover kit		1
817	781 61 03		Suction cover kit		1
900	727 25 00		Motor kit		1
900	727 25 02		Motor kit		1
901	90 17 52		Oil ISO VG 32	*	*

Xylem |'zīləm|

- 1) The tissue in plants that brings water upward from the roots;
- 2) a leading global water technology company.

We're a global team unified in a common purpose: creating advanced technology solutions to the world's water challenges. Developing new technologies that will improve the way water is used, conserved, and re-used in the future is central to our work. Our products and services move, treat, analyze, monitor and return water to the environment, in public utility, industrial, residential and commercial building services settings. Xylem also provides a leading portfolio of smart metering, network technologies and advanced analytics solutions for water, electric and gas utilities. In more than 150 countries, we have strong, long-standing relationships with customers who know us for our powerful combination of leading product brands and applications expertise with a strong focus on developing comprehensive, sustainable solutions.

For more information on how Xylem can help you, go to www.xylem.com



Visit our Web site for the latest version of this document and more information

The original instruction is in English. All non-English instructions are translations of the original instruction.

© 2018 Xylem Inc